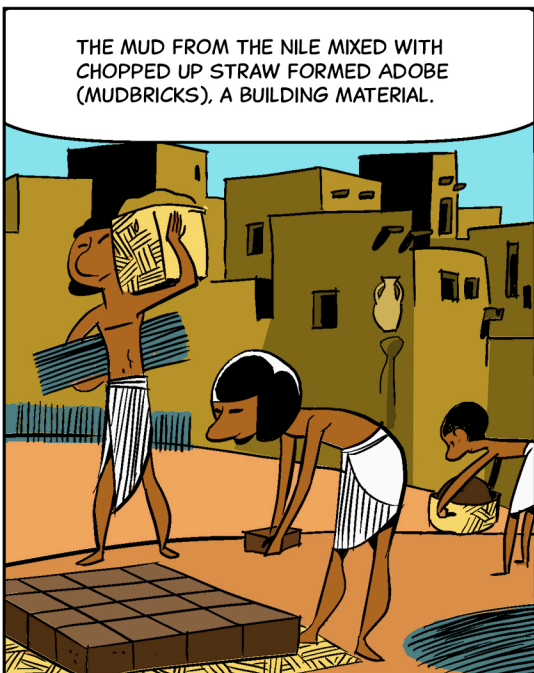
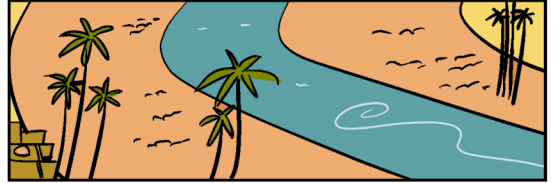
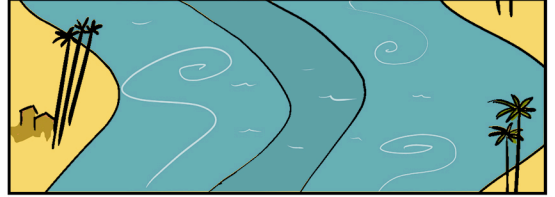




EVERY YEAR BETWEEN JUNE AND SEPTEMBER THE NILE FLOODS ITS BANKS, FERTILIZING THE LAND WITH DIRT AND SILT CARRIED FROM UPSTREAM.





CITIES GREW AND FLOURISHED ON THE BANKS OF THE NILE, LINKED BY THE RIVER THE CITIES JOINED INTO KINGDOMS.



FIVE THOUSAND YEARS AGO THERE WERE TWO KINGDOMS, UPPER AND LOWER EGYPT.



THEN THEY WERE UNIFIED, GIVING BIRTH TO ONE OF THE LONGEST EMPIRES IN HISTORY.

MENES OR NARMER IS CALLED THE FIRST PHARAOH, ALTHOUGH THE KINGS OF EGYPT DID NOT TAKE THIS TITLE UNTIL CENTURIES LATER.

**EGYPT**

MEDITERRANEAN SEA

LOWER KINGDOM

UPPER KINGDOM

RED SEA

TO KEEP AND PROTECT SUCH A BIG AND POWERFUL EMPIRE THE PHARAOH NEEDED TO KEEP A STRONG ARMY.



BUT HAVE YOU EVER THOUGHT ABOUT WHAT THAT ENTAILS?

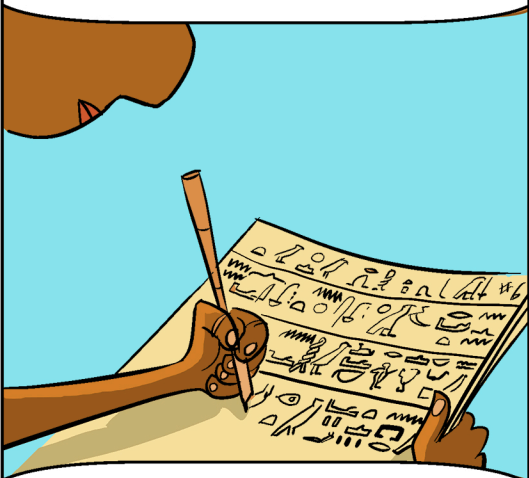
AN ARMY NEEDS TO FEED AND EQUIP ITS SOLDIERS.



FOR THAT YOU NEED SOMEBODY KEEPING WRITTEN RECORDS



EGYPTIANS DIDN'T INVENT WRITING BUT WERE THE FIRST ONES TO USE A PHONETIC ALPHABET.



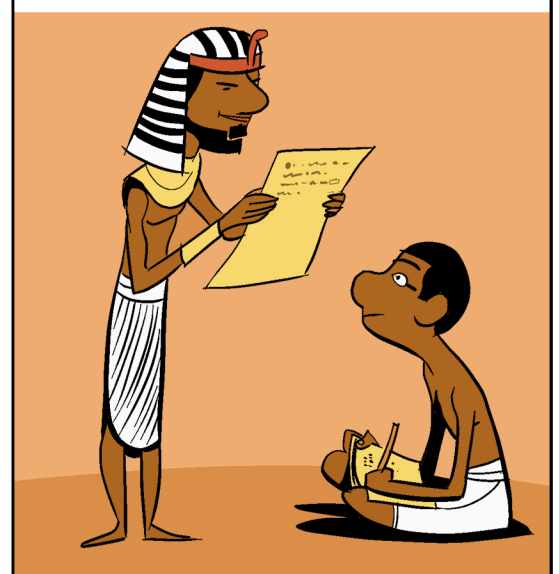
A SYSTEM IN WHICH SOUNDS ARE REPRESENTED BY SYMBOLS.

BEFORE THIS REVOLUTIONARY INVENTION, TO WRITE OR READ YOU HAD TO LEARN THOUSANDS OF SYMBOLS, ONE FOR EACH WORD

Head	bread	eat	cow
Plow	carp	walk	hand
barley	pan	water	day
bird	behind	life	dog
sun	mountain	heart	wood



WHILE THE EGYPTIANS ONLY USED THE PHONETIC ALPHABET SPORADICALLY THE IDEA OF IT TOOK HOLD IN NEARBY COUNTRIES.



IN ADDITION TO A LANGUAGE WHICH WAS POSSIBLE TO READ AND WRITE, YOU ALSO NEEDED A MATERIAL TO WRITE ON THAT WAS EASY TO TRANSPORT AND STORE.



PAPYRUS MADE FROM THE STEM OF THE PAPYRUS PLANT THAT GREW ON THE RIVER BANKS WAS THAT MATERIAL.



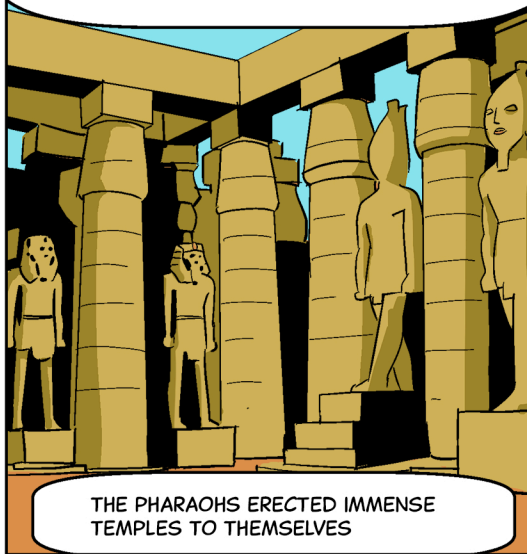
PAPYRUS WAS USED IN EGYPT AND ABROAD AND WAS ONE OF THE GOODS THE EGYPTIANS TRADED WITH OTHER COUNTRIES.



TO MEASURE LAND AND COLLECT TAXES FOR THE PHARAOH, THE EGYPTIANS DEVELOPED MEASURING TECHNIQUES.



THE PHARAOH WAS NOT ONLY THE OWNER OF ALL THE LAND IN EGYPT BUT ALSO SUPREME COMMANDER OF THE ARMY AND CONSIDERED TO BE A LIVING GOD.



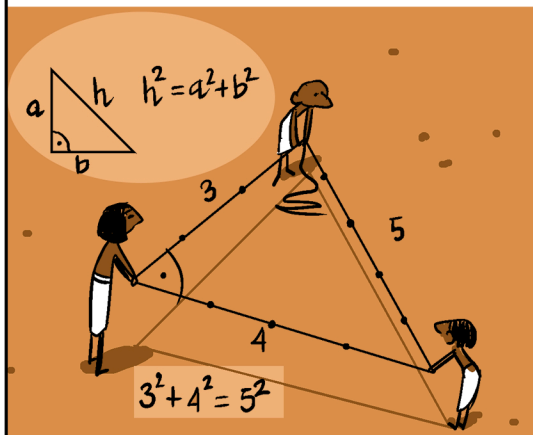
THE PHARAOHS ERECTED IMMENSE TEMPLES TO THEMSELVES

SOPHISTICATED KNOWLEDGE IS REQUIRED TO BUILD SUCH STRUCTURES.



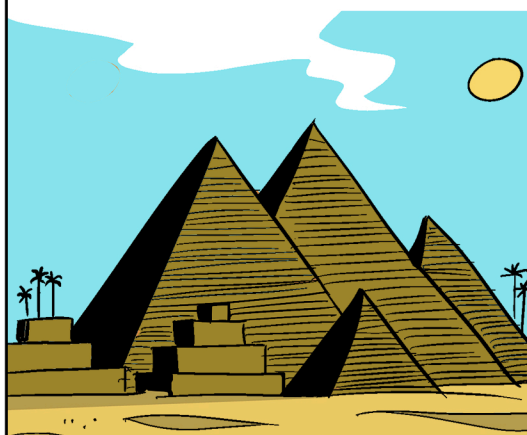
TO CALCULATE THE VOLUME OF STONE REQUIRED FOR A TOMB OR A TEMPLE OR TO CARVE HIEROGLYPHIC WRITING IN A CYLINDRICAL COLUMN YOU NEED GEOMETRY.

RIGHT TRIANGLES WERE KNOWN AND USED BY THE EGYPTIANS.



RIGHT TRIANGLES LIKE THE 3-4-5 TRIANGLE ALLOWED THEM TO DRAW PERFECT SQUARE ANGLES IN THE GROUND WITH THE HELP OF JUST A PIECE OF ROPE.

ANCIENT EGYPTIANS WERE OBSESSED WITH THE AFTERLIFE.



THE GREAT PYRAMIDS, FOR THOUSANDS OF YEARS THE BIGGEST BUILDINGS IN THE WORLD ARE ACTUALLY TOMBS.

TO GET TO THE AFTERLIFE, EGYPTIANS HAD THEIR BODIES EMBALMED AND MUMMIFIED.



THIS PRACTICE GAVE EGYPTIAN PHYSICIANS A VERY ACCURATE KNOWLEDGE OF HUMAN ANATOMY.